

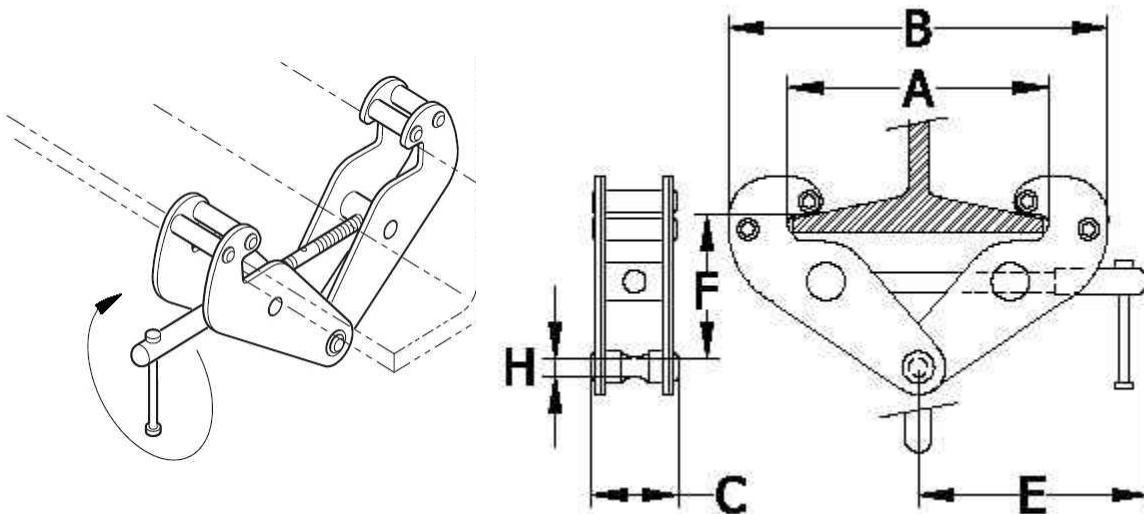


BEAM CLAMPS^{CE}

1 to 10 Metric Ton Capacity

FEATURES

- The easy way to install a fixed hoist mount or to hang a beam
- Simple installation by hand, no tools required for adjustment to beam flange
- Compact and portable low headroom design
- Meets OSHA, NASA and ASME B30.16 having a minimum design factor of 5:1 for use with manual or powered hoist



BC SERIES SPECIFICATIONS and DIMENSIONS (Inches and Pounds)								
Model	5:1 Design (WLL)	A"	B " Max	C"	E"	F" Max	H"	W (Lbs) Weight
BC-1	1t (2200 Lbs)	3.0-9.0	14.96	2.52	8.54	5.91	0.75	7
BC-2	2t (4400 Lbs)	3.0-9.0	14.96	2.99	8.54	5.91	0.83	9
BC-3	3t (6600 Lbs)	3.15-12.6	19.69	3.94	10.91	8.66	0.91	20
BC-5	5t (11000 Lbs)	3.54-12.6	19.69	4.41	10.91	8.66	1.14	24
BC-10	10t (22000 Lbs)	3.54-12.6	19.69	4.72	11.22	8.66	1.54	35

ZINC PLATED GRADE 80 LOAD CHAIN
(Made in Japan or Europe)



CHAIN SPECIFICATIONS and DIMENSIONS

(Inches and Pounds unless noted)

(Inches) Dia x Pitch mm	Pitch in.	Working Load Limit 4:1 (WLL) lbs	Bulk Length	Weight Lbs/Ft	AMH PART NO	Models used on
(0.157") 4 x 12 mm	0.472	1130	328 FT	0.25	C4X12Z	L, M, ML & MM003
(0.197") 5 x 15 mm	0.591	1765	328 FT	0.36	C5X15Z	L, M, MA & M005
(0.236") 6 x 18 mm	0.709	2530	328 FT	0.54	C6X18Z	L, LA008-010, M & MA010
(0.276") 7.1 x 21 mm	0.827	3558	328 FT	0.74	C7X21Z	L, LA, M & MA015
(0.315") 8 x 24 mm	0.945	4519	328 FT	0.92	C8X24Z	L, LA, M & MA020
(0.354") 9 x 27 mm	1.063	5720	328 FT	1.25	C9X27Z	LA025, M & MA050-250
(0.394") 10 x 28 mm	1.102	7065	328 FT	1.5	C10X28Z	LA030-060-090, M & MA030 & 300
(0.394") 10 x 30 mm	1.181	7065	328 FT	1.48	C10X30Z	L030-060-090
(0.197") 5 x 23.7 mm	0.933	Zinc Plated Hand Chain		0.19	C5X24Z	MA, M & Trolley
(0.100") 2.7 x 14.5 mm	0.565	Zinc Plated Hand Chain		0.10	C3X15Z	MM003

We supply quality replacement chains in bulk for most brands of hoists.