

The Flange Jack

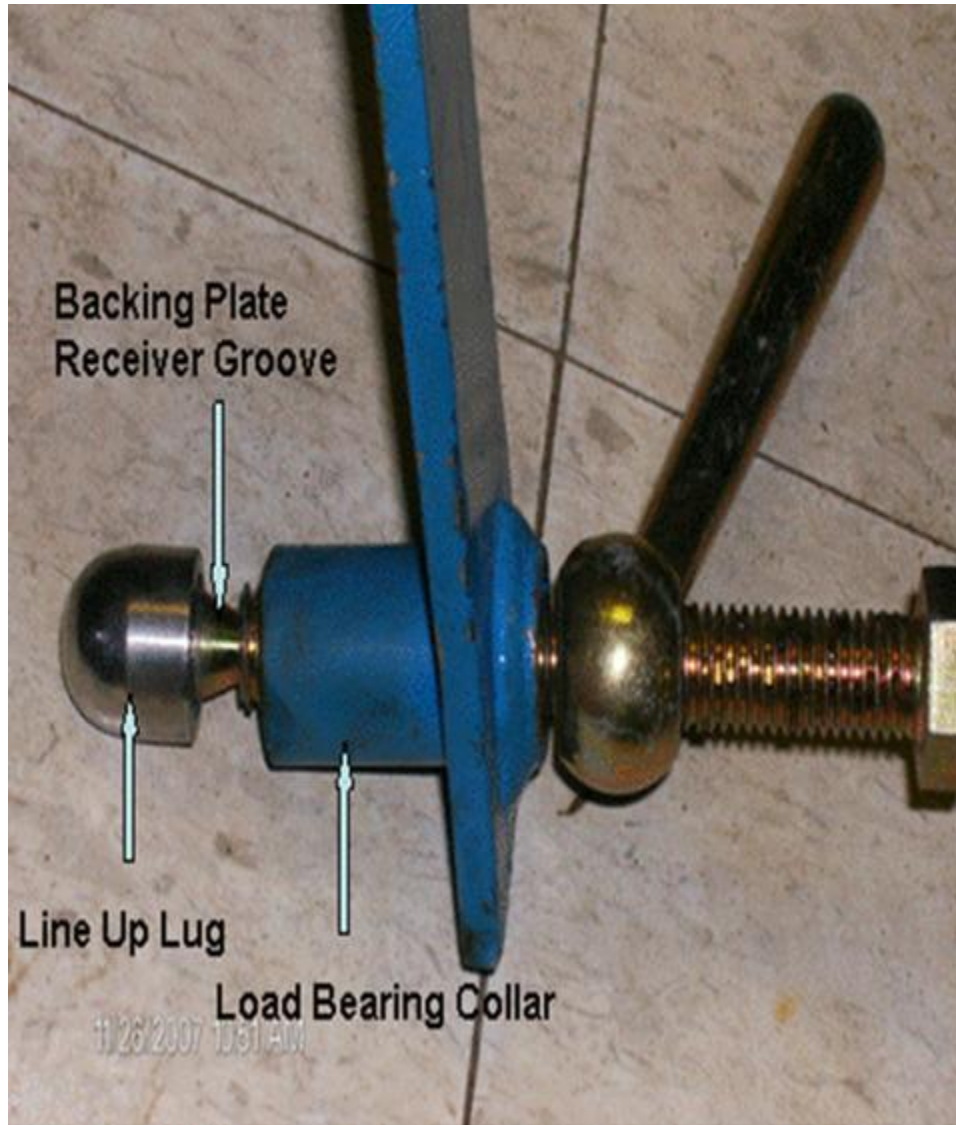


Flange Jack is designed to assist in the installation and removal of piping flanges in the vertical position, up to 1000 pounds in actual weight. It is *not* designed or intended for horizontal lifting. **Horizontal lifting may weaken the device, and therefore is against the manufacturer's recommendations and will void all warranties.**

Advantages of the Flange Jack are:

- Holds flange level in a two-holed position for ease of installation and removal.
 - May be installed with minimal breakage of flange seal.
 - Has line-up lugs to assist in installation.
 - No tools required for installation or removal.
 - Works on wide variety of flange sizes and types (up to 1000 pounds).
 - Helps to keep workers' hands free of pinch points during installation

Operating the Flange Jack



Installation process

When installing flange jack onto a flange that has not been installed yet:

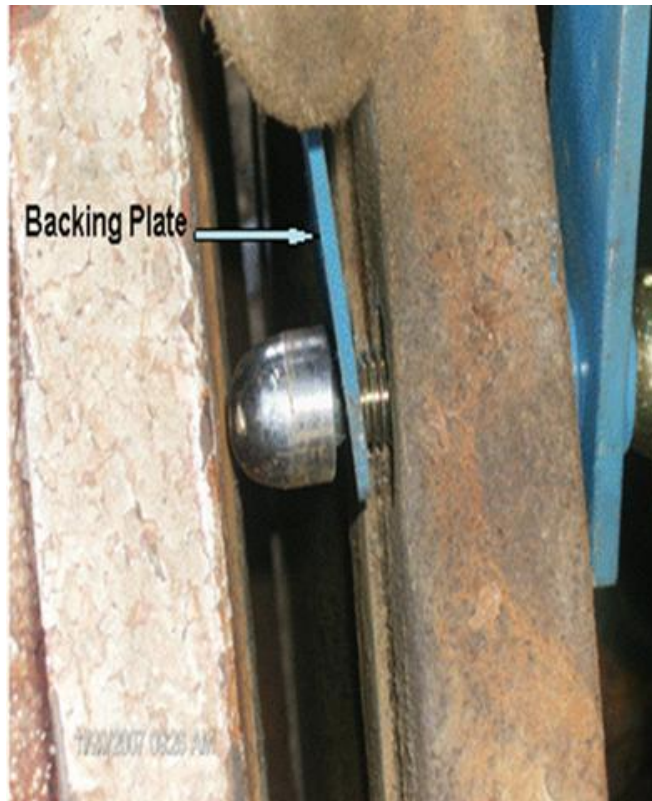
1. Verify that flange weight and size is within listed limits of the model Flange Jack you are using.
2. Inspect all components of the Flange Jack. If any parts are bent, cracked, dented, or otherwise distorted, or if excessive wear is evident, do not use.
3. Make sure flange is held securely upright.

4. Align line-up lugs with flange bolt holes, one at 2 o'clock, the other at 10 o'clock. There should be two empty holes between the holes the line-up lugs are inserted into.

If necessary, the Flange Jack may be inserted with the lugs side-by-side in the two top-most holes, but to make sure the flange is two-holed they must either be together or have 2 empty bolt holes between.

5. With the line-up lugs protruding through the inside face of the flange, make sure the tension bolts are coming through the flange enough to seat the backing plate bolt receiver groove down onto the backing plate groove in the tension bolt.

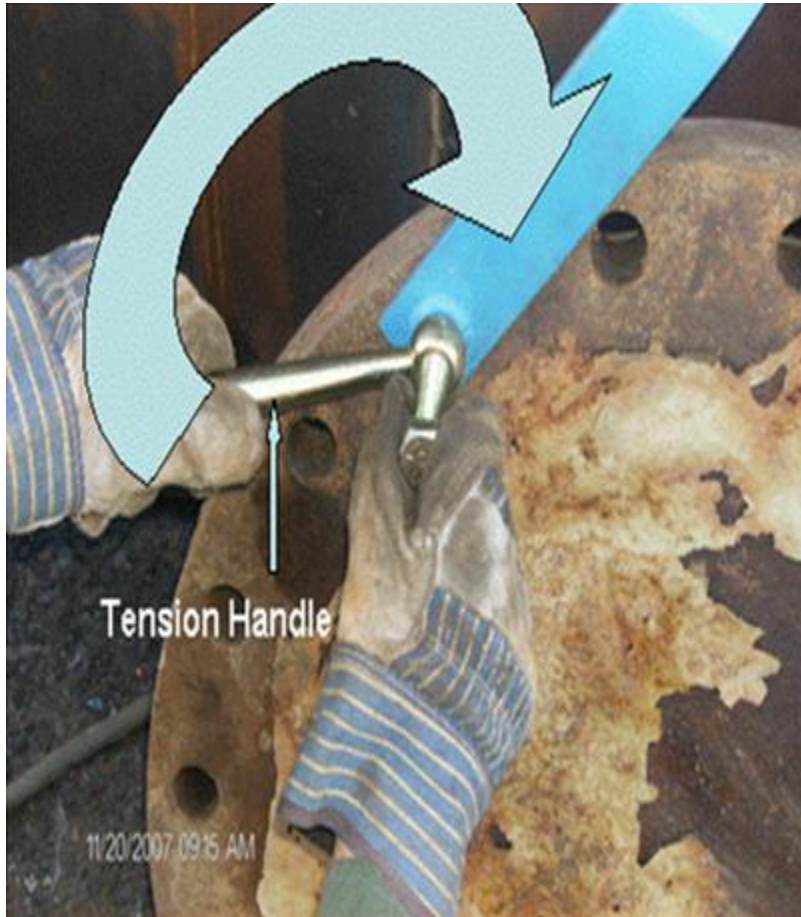




6. Once the backing plate has been inserted into the groove, with gloved hands, grab the tension handle with one hand and place it at the 9 o'clock position. With the other hand on the head of the tension bolt, turn it counter clockwise as in the photo below, backing it out from the device so that it moves back out away from the flange until it is snug against the backing plate on the opposite side of the flange.



7. When it becomes snug, hold the head of the tension bolt and rotate the tension handle clockwise until it is tight. Watch out for any pinch points. Never use a cheater bar or tighten handle with a hammer or any other tool. Normal hand pressure is sufficient. Pull up firmly on the backing plates to verify they are secure.



8. With tension handles snug, you are ready to lift the flange into place. Always use a tag line in order to keep your hands off of the suspended load at all times. Keep hands and all other body parts free from line of fire hazards as the flange is positioned into place.

Properly Installed Flange Jack



Guide Line-up Lugs into Flange Hole

