

# HC-Series Garden Hose Couplings

- Heavy duty garden hose couplings, ideal for contractor or landscape applications.
- Corrosion resistant materials optimize corrosion resistance in a variety of environments.
- Smooth bore full-flow design ensures maximum flow with minimal pressure drop.
- Available in a variety of end and valved configurations to ensure compatibility in a variety of applications.



Performance Specifications	Operating Bar (PSI)	Min. Burst Bar (PSI)	Flow Rate $\Delta P=1$ Bar	Locking Mechanism
3/4" (HC)	14 (200)	55 (800)	8 LPM (30 GPM)	3 Balls
3/4" (HCP)	14 (200)	55 (800)	8 LPM (30 GPM)	3 Balls

Series Interchange	Parker	Hansen	Tomco	---
3/4" (HC)	---	Series 'GH'	Series 'GH'	---
3/4" (HCP)	1163-Series	---	---	---

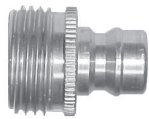
## HC-Series Garden Hose Interchange (Coupler)



(Female Thread)

Part Number	Body Size	Thread Size	Body Material	Weight (lb)	List Price	Bag Qty	Pack Qty
6HCFG6-B	3/4"	3/4"- 11 1/2 garden	brass	0.13	<b>\$8.99</b>	5	50

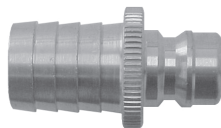
## HC-Series Garden Hose Interchange (Nipple)



(Male Thread)

Part Number	Body Size	Thread Size	Body Material	Weight (lb)	List Price	Bag Qty	Pack Qty
HC6MG6-B	3/4"	3/4"- 11 1/2 garden	brass	0.08	<b>\$4.07</b>	5	50

## HC-Series Garden Hose Interchange (Nipple)



(Hose Barb)

Part Number	Body Size	Barb Configuration	Body Material	Weight (lb)	List Price	Bag Qty	Pack Qty
HC6S5-B	3/4"	5/8" Hose Barb	brass	0.06	<b>\$2.82</b>	5	50
HC6S6-B	3/4"	3/4" Hose Barb	brass	0.05	<b>3.99</b>	5	50

## HCP-Series Garden Hose Interchange (Coupler)

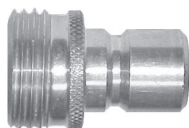


(Female Thread)

Part Number	Body Size	Thread Size	Body Material	Weight (lb)	List Price	Bag Qty	Pack Qty
6HCPFG6-B	3/4"	3/4"- 11 1/2 garden	brass	0.13	<b>\$8.80</b>	5	50
6HCPFG6-B-V	3/4"	3/4"- 11 1/2 garden	brass	0.14	<b>14.95</b>	5	50

- V indicates valved model

## HCP-Series Garden Hose Interchange (Nipple)



(Male Thread)

Part Number	Body Size	Thread Size	Body Material	Weight (lb)	List Price	Bag Qty	Pack Qty
HCP6MG6-B	3/4"	3/4"- 11 1/2 garden	brass	0.08	<b>\$4.50</b>	5	50