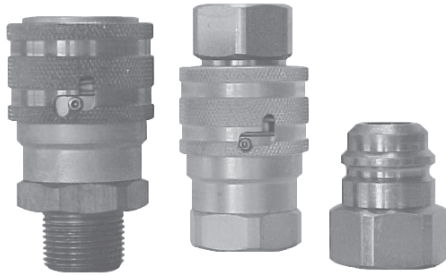


1058-Series Heavy Duty Pneumatic/Steam



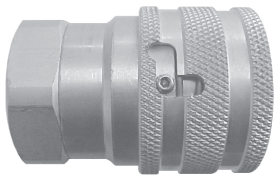
- Z-Pattern safety lock mechanism protects against unintended disconnection.
- High endurance steam seals are standard to maximize service life in rugged pneumatic or steam applications.
- High flow tubular valve system ensures optimal flow performance with minimal pressure drop.
- Ideal for rubber molding and other strenuous/rugged steam applications
- Rugged corrosion resistant materials ensure long service life in extreme environments.

Performance Specifications	Operating Bar (PSI)	Min. Burst Bar (PSI)	Flow $\Delta P=0.4\text{Bar}$ (6.9 Bar Inlet)	Locking Mechanism
3/4"	17 (250) *	345 (5,000) **	220 CFM	9 Balls

* Operating pressure is a steam-based calculation based upon a maximum operating temperature of 400°F.

** Burst values are based upon values gathered during standard air over water testing.

1058-Series Heavy Duty Pneumatic/Steam (Coupler)



(Female Thread)

Part Number	Body Size	Thread Size	Body Material	Weight (lb)	List Price	Bag Qty	Pack Qty
1058S-F6	3/4"	3/4"-14 NPTF	brass	1.11	\$83.20	---	10

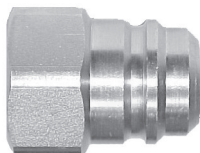
1058-Series Heavy Duty Pneumatic/Steam (Coupler)



(Male Thread)

Part Number	Body Size	Thread Size	Body Material	Weight (lb)	List Price	Bag Qty	Pack Qty
1058S-M6	3/4"	3/4"-14 NPTF	brass	1.06	\$79.03	---	10

1058-Series Heavy Duty Pneumatic/Steam (Nipple)



(Female Thread)

Part Number	Body Size	Thread Size	Body Material	Weight (lb)	List Price	Bag Qty	Pack Qty
1058P	3/4"	3/4"-14 NPTF	steel	0.32	\$14.13	---	10



Attention Required!

Do Not Disconnect Steam Couplings While Under Pressure!

Maximum operating temperature for steam service couplings is 204°C (400°F). Be sure to use safety chains, or equivalent means, to prevent the line from thrashing around in case the coupling becomes disconnected.