



### HT-3TL SERIES

Chemical Transfer  
 Safety Quick Coupling



#### Description

The HT-3TL 'Transfer Loading' Series is an all purpose high performance quick coupling designed for leakproof sealing through a wide range of temperatures. The design offers a non restrictive flow with no variation in pipe diameter. The reusable sealing components are made of different metals having their own unique hardness and thermal properties, so as to further enhance the seal as temperature changes are encountered. The safety ring ensures safe venting any residual pressure.

### HT-3TL-MK2 SERIES

Chlorine Transfer  
 Safety Quick Couplings



#### Features

- Designed to replace hammer unions and conventional CAM locking couplings.
- Repeatedly reusable metal to metal with tertiary enviro "O" ring seal.
- Non-restrictive flow characteristics for faster hook-ups.
- Unique automatic safety feature vents residual pressure and locks coupling prior to complete uncoupling.
- Only light torque required when tightening to rated pressure.
- Compact and available in any combination, of threaded, butt weld or hose barbed ends to reduce installation cost.
- Designed and tested to ANSI B31.3.
- Quality assurance to ISO 9001-2000.
- Material traceability available.



**Engineered Systems**  
PART OF OPW FLUID TRANSFER GROUP  
A DOWD COMPANY

- PIPE, TUBING, AND HOSE COUPLING SEALING SOLUTIONS
- PROCESS PIGGING
- PRODUCT RECOVERY TECHNOLOGIES



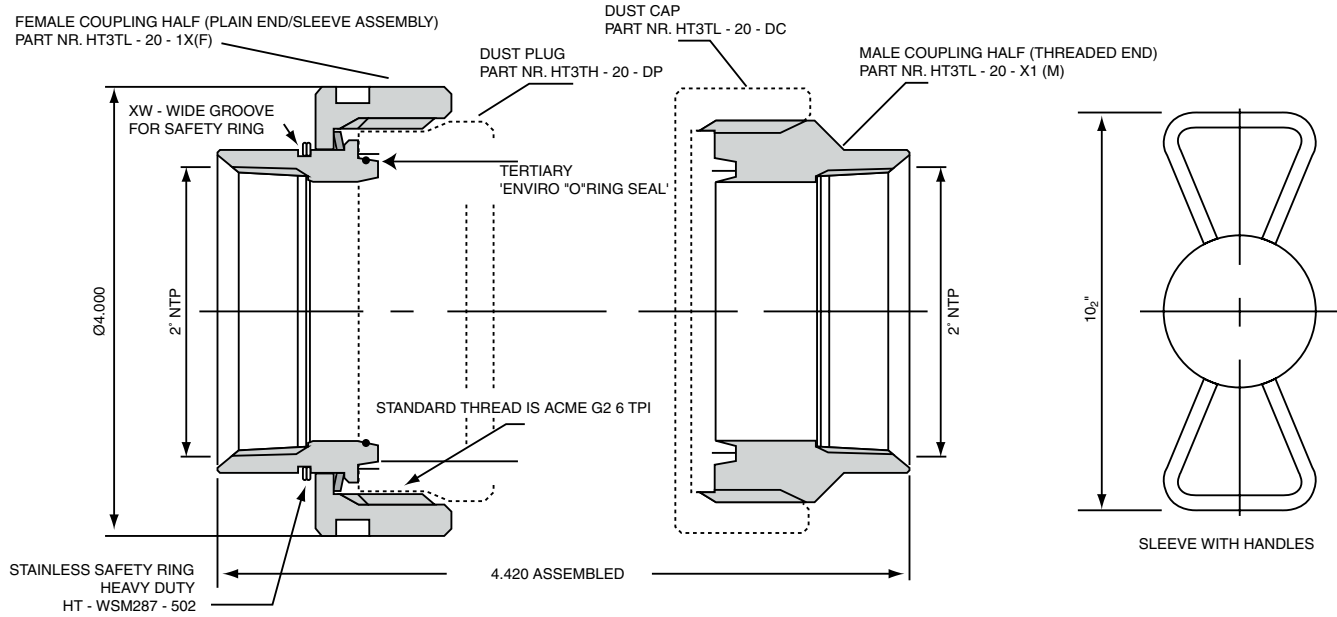
### HT-3TL SERIES

- Chemical Transfer
- Safety Quick Coupling

### HT-3TL-MK2 SERIES

- Chlorine Transfer
- Safety Quick Couplings

#### 2" HT-3TL - 20 - 11 (Internal N.P.T. threads)



Size Nominal (Inch) (mm)	Working pressure PSI			Outside diameter		Overall length	
	Socket Pressure ratings for 100° F 38°C	Thread	Butt Sch.40	(Inch)	(mm)	(Inch)	(mm)
1.00 25.4	Please contact Hiltap for detailed specifications			2.50	63.5	2.75	69.8
1.50 37.7				3.00	76.2	4.00	101.6
2.00 50.8				3.75	95.3	4.50	114.3
3.00 76.2				5.00	127.0	5.50	139.7
4.00 101.6				5.87	149.2	5.50	139.7

\* For prolonged applications in temperatures above 500°F (267° C) use of stainless steel coupling is recommended.

#### Order Information HT3TL - 20 - 11 - C

Size	Plain end	Threaded end	Material
Nominal size	Sleeve/Male end thread type*		<ul style="list-style-type: none"> <li>• Carbon steel A350/LF2.</li> <li>• Stainless steel 304/316/316L</li> <li>• Monel</li> <li>• Alloy 20</li> <li>• Alloy C276</li> <li>* Other coatings (eg.) (Zinc, Cadmium, Teflon)</li> <li>Zinc coating standard on carbon steel products</li> <li>* All stainless austenitic steel sleeves undergo an anti-galling process</li> </ul>
10- 1.0 inches (25.4mm)	8 SA		
15- 1.5 inches (37.7 mm)	8 SA		
20- 2.0 inches (50.8 mm)	6 A		
30- 3.0 inches (76.2 mm)	4 A		
40- 4.0 inches (101.6 mm)	3 A		
60- 6.0 inches (152.4 mm)			
	<ol style="list-style-type: none"> <li>1. Internally threaded (NPT)</li> <li>*2. Externally threaded (NPT)</li> <li>3. Butt weld</li> <li>*4. Socket weld male</li> <li>*5. Socket Weld female</li> <li>*9. Internall threaded (NPT) with Seal weld shoulder</li> <li>*Special order</li> </ol>		

**Note:** Other materials, sizes and pressure ratings are available.  
End caps/Plugs and dust caps are available.

Safe, Environmentally friendly, Quality products.  
Patented, Patents pending.  
1-800-661-6150 Toll-free U.S. only  
(403) 250-2986 Canada (403) 291-3592 Fax  
[www.hiltap.com](http://www.hiltap.com)

**Distributed by:**











**Engineered Systems**  
PART OF OPW FLUID TRANSFER GROUP  
A DOVER COMPANY

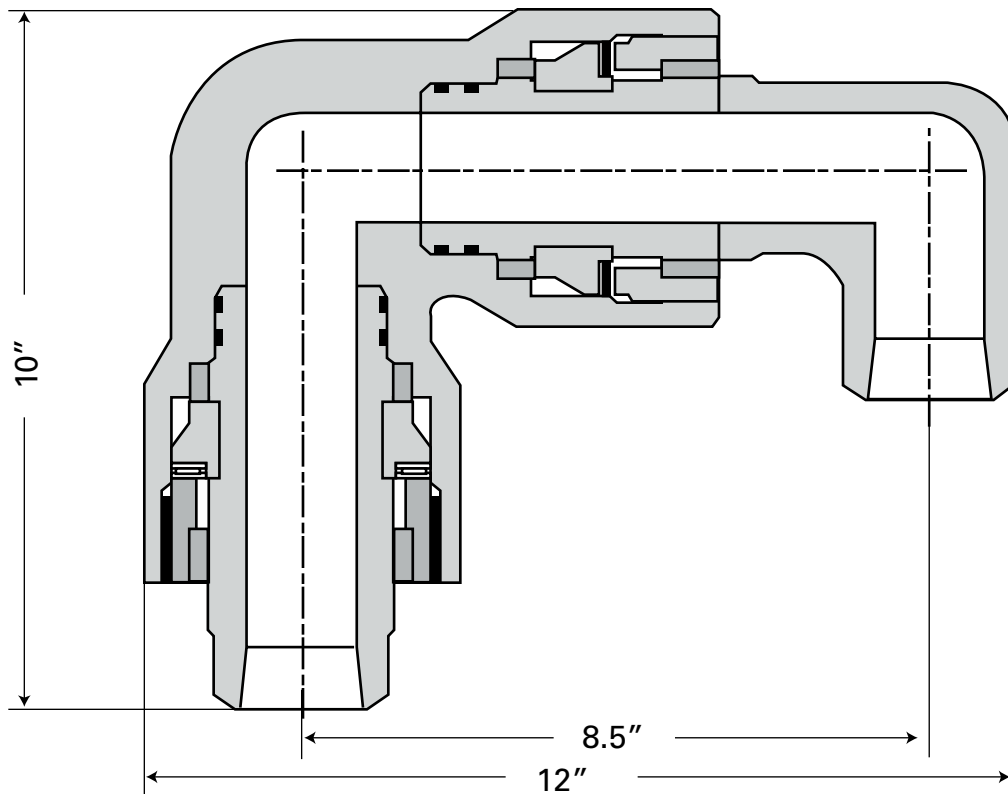
- PIPE, TUBING, AND HOSE COUPLING SEALING SOLUTIONS
- PROCESS PIGGING
- PRODUCT RECOVERY TECHNOLOGIES

**HILTAP**  
FITTINGS LTD.



## HT-SWVL SERIES

### Lasso SWIVEL JOINT



Hiltap 2" - 6000 psi SWIVEL  
Drawing number HTSWVL-20-3054-8  
Detailed dimensions and  
specifications available

*Available with HILTAP Impact Union  
HT-3IU series high performance unions  
or HILTAP Hammer Unions that also offer:*

- Canadian Registration Numbers exist
- NACE materials
- Cold temperature materials, Charpy "V" notch tested
- 6000 (6850 actual) psi pressure designation

Safe, Environmentally friendly, Quality products.  
Patented, Patents pending.

1-800-661-6150 Toll-free U.S. only  
(403) 250-2986 Canada (403) 291-3592 Fax  
[www.hiltap.com](http://www.hiltap.com)

**Distributed by:** \_\_\_\_\_

OPW<sup>®</sup>

Engineered Systems

PART OF OPW FLUID TRANSFER GROUP

A DOVER COMPANY

- PIPE, TUBING, AND HOSE COUPLING SEALING SOLUTIONS
- PROCESS PIGGING
- PRODUCT RECOVERY TECHNOLOGIES

HILTAP  
FITTINGS LTD.



### HT-LQC Series

"Twister"

Locking Quick Connect



The Twister

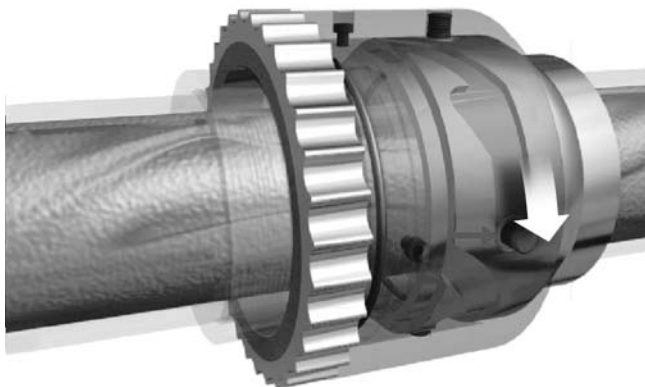
1/4 Turn  
Rapid Engagement



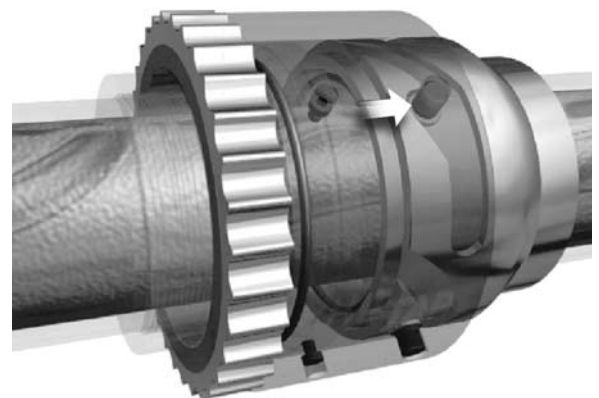
Easy  
Alignment



Pressure or Vacuum  
Energizes Sealing & Locking



Pressure Locking  
The Ultimate Safety Feature



Safe, Environmentally friendly, Quality products.  
Patented, Patents pending.

1-800-661-6150 Toll-free U.S. only  
(403) 250-2986 Canada (403) 291-3592 Fax  
[www.hiltap.com](http://www.hiltap.com)

Distributed by: